

**THE CORPORATION OF THE
MUNICIPALITY OF TEMAGAMI**

BY-LAW NO. 06-679

Being a by-law to close and stop up a shore road allowance

WHEREAS under Section 34 of the Municipal Act, 2001, S.O., 2001, c.25, as amended, a municipality has the capacity, rights, powers and privileges to pass by-laws to stop up and close streets and lanes within the Municipality of Temagami;

AND WHEREAS notice of its intention to pass this by-law was published for at least three (3) successive weeks in the Temiskaming Speaker;

AND WHEREAS the Council of the Corporation of the Municipality of Temagami has made provision for and has heard in person who claims that this land will be prejudicially affected by this by-law and has applied to be heard;

NOW THEREFORE the Council of the Corporation of the Municipality of Temagami hereby enacts as follows:

1. To close and stop up that Portion of the Shore Road Allowance adjacent to Mining Location WD 257 and WD 259 (as shown on Schedule "A") in the Municipality of Temagami, District of Nipissing.

BE TAKEN AS READ A FIRST time on this 5th day of October, 2006.

READ A SECOND AND THIRD time and finally passed this 5th day of October, 2006.


MAYOR


CAO/Clerk

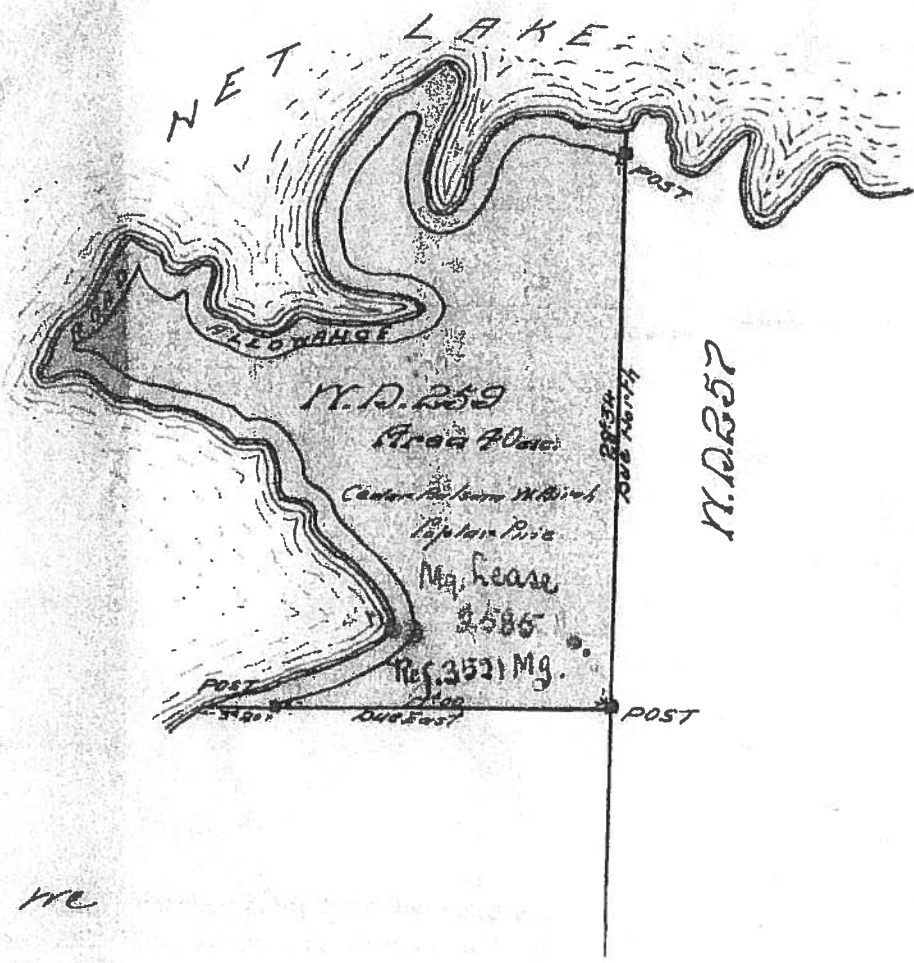
G.M.P.B. 7 Page 87

OFFICE FILE # 43680
REGISTRATION NO 84472
CATALOGUED

PLAN
OF
MINING LOC# N.D.N# 259

MICROFILMED

Dist. of Nipissing
Scale 10 chs. to an inch



MC

OUR

De Morant & Silvester

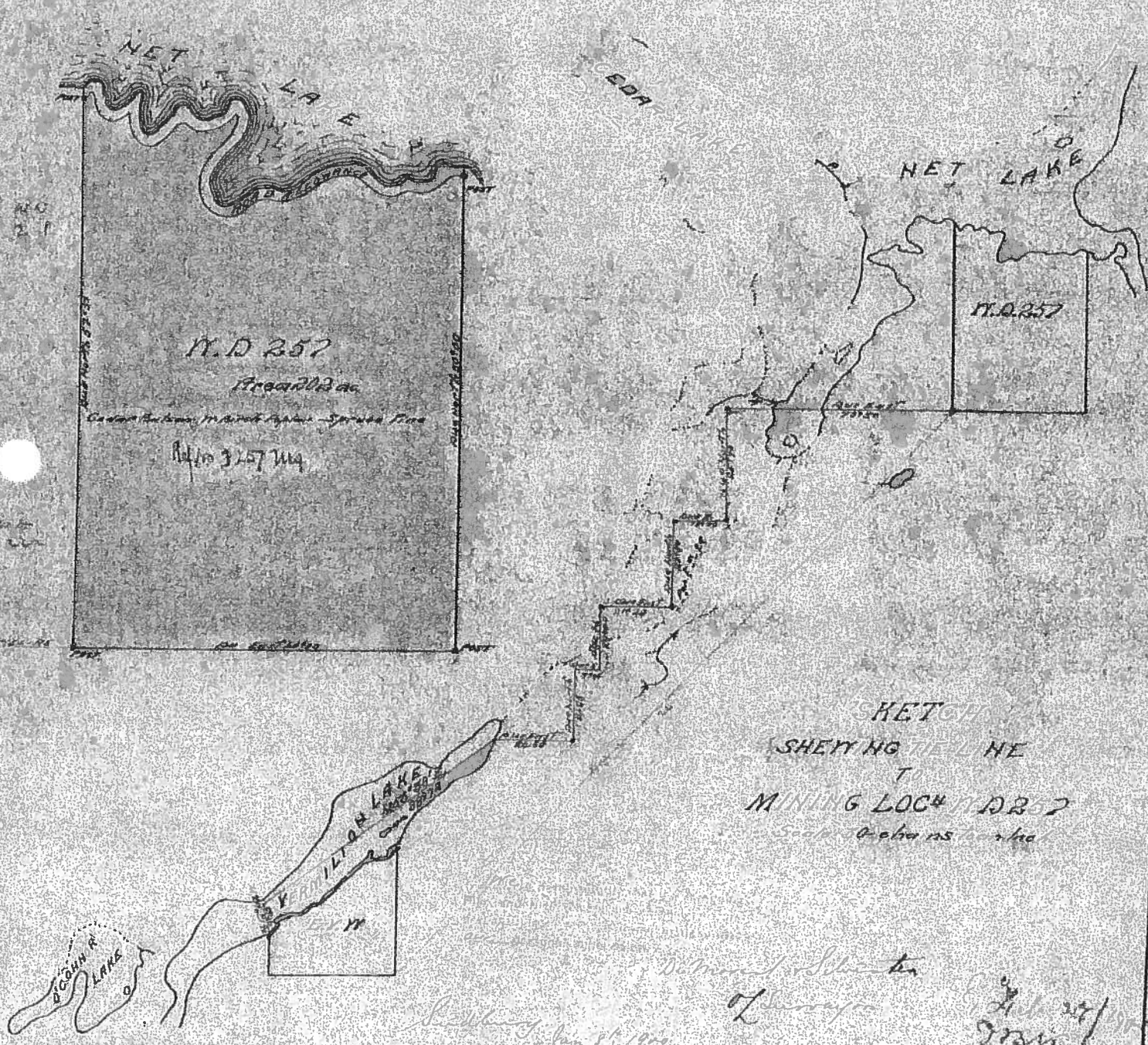
Sudbury
Jan 8th 1900

J. Lorrain
E. J. Feb 28 / 1900
msl

Land down

PLAN
OF
MINING LOC# M.D.N 257

Dist. of Wyoming
Scale: 100 ft to an in. h.



KETCH
SHEPPING FIELD NE
TO
MINING LOC# M.D. 257
Scale: 100 ft to an in. h.

DeMond & Silvester
of Surveyors

Beckwith Jan 21, 1905

Jan 21 / 1905
Graw